

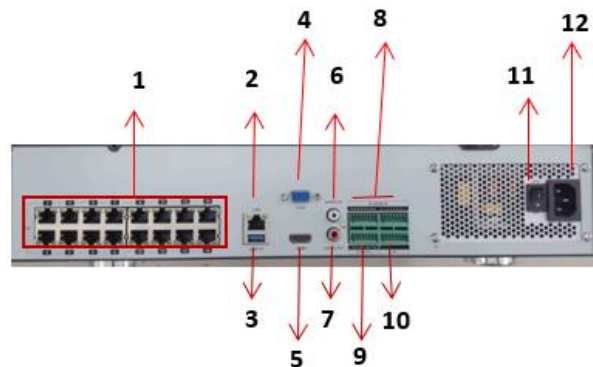
PRODUCT:	Cortex Setup Wizard
ITEM CODE:	

Introduction

This guide has been formulated to assist with the initial connection setup of Cortex.

Back panel image

1. PoE Ports/PnP Ports
2. LAN/Network Port
3. USB Port
4. VGA Port
5. HDMI Port
6. Audio in (mic)
7. Audio out (speaker)
8. Alarm In port (sensor/button)
9. Alarm out (siren/light)
10. Grounding
11. Power Switch
12. Power input.



Setup Wizard

1. Connect power cable, mouse and monitor to NVR and switch on. Initial startup will take around 10 minutes. When booted up you will see multiple camera tiles.
2. Click Ok to run settings wizard



3. Login using default login
User: adminHibernator/Terminator – ad^minCommander – ad@min20
4. Once on and initialised, right click and select login to unit using relevant password:
 - Hibernator/Terminator – ad^min
 - Commander – ad@min20

PureTech Electrical Products Ltd. Telephone: +44 (0)2392 488300	Page 1 of 15 Issued By: Technical Dept
Approved By: Technical Manager	Date: 09/02/2024

5. You can change the password, optional but recommended.

6. Set current date and time/timezone.

7. Set network settings and enable/disable PNP (plug n play)

PNP: Give cameras IP addresses automatically (off by default)

Interfaces: Choose between Ethernet connections

Configure: Enable or Disable DHCP for recorders local IP

8. Network Port Settings (only to be changed if requested by IT department.)

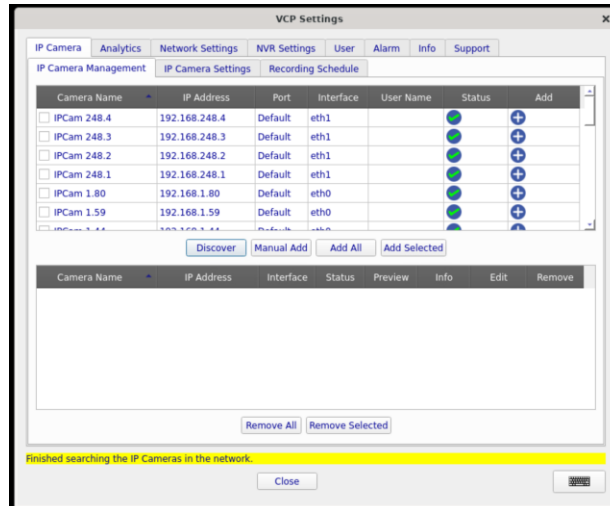
9. DDNS settings (only used if P2P is not an option)

10. If network settings are changed, the system will prompt a reboot.

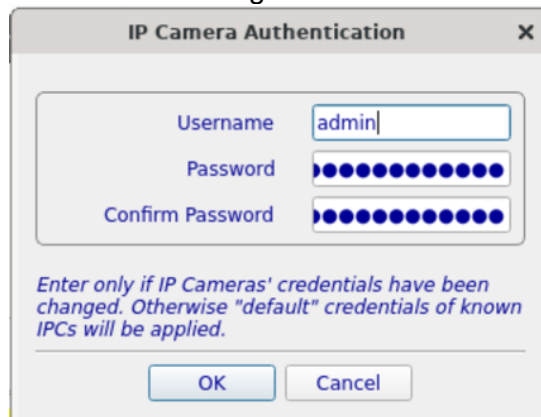
11. QR Code will show (allows Cortex Go to link to NVR)

Adding IP cameras

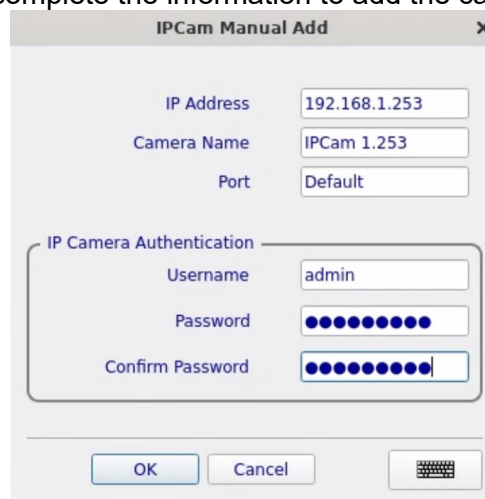
1. Once IP cameras are connected to PoE switch and to ethernet port on NVR, login to NVR and navigate to “IP camera Management”



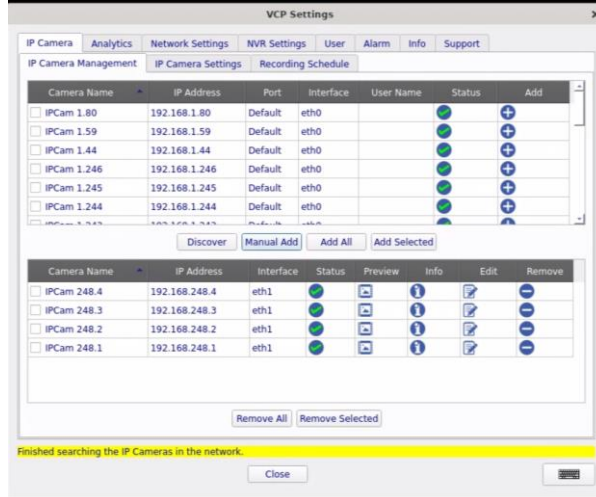
2. Cameras detected will show in the top box. Tick the box on the camera you wish to add and click “Add Selected”. Add the camera login:



OR select “Manual Add” and complete the information to add the camera manually.

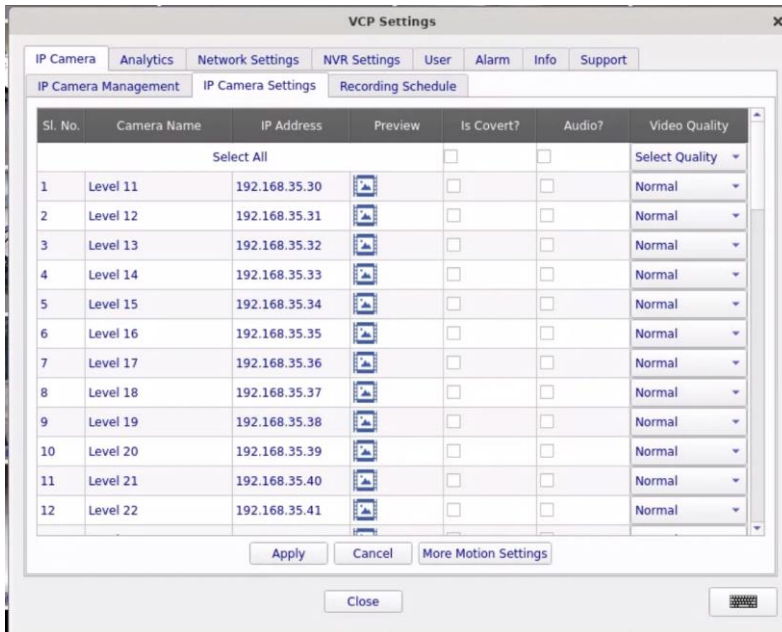


3. Camera will then appear in bottom box. (A green status tick to show online)



(You can edit and re-name the camera by clicking edit)

4. On the IP Camera Settings tab, you can amend video settings

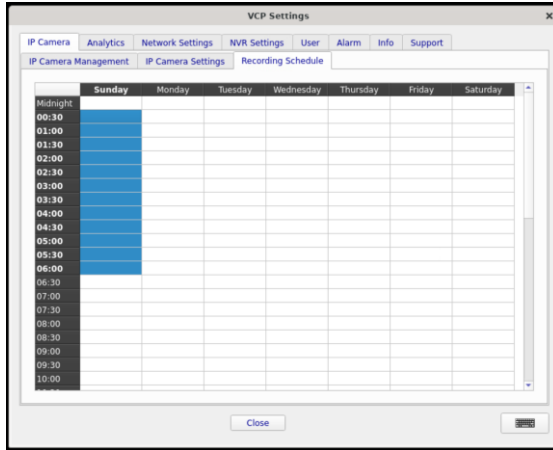


Is Covert: This will allow to hide a camera from live preview.

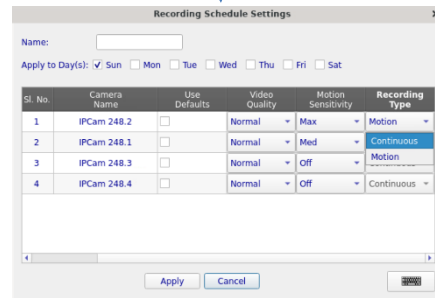
Audio: Enable or disable camera audio.

Video Quality: Choose quality/bitrate of video being streamed. If camera is lagging, you can lower the quality.

5. On “Recording Schedule” tab, choose what day and times you need to record footage on which channels:

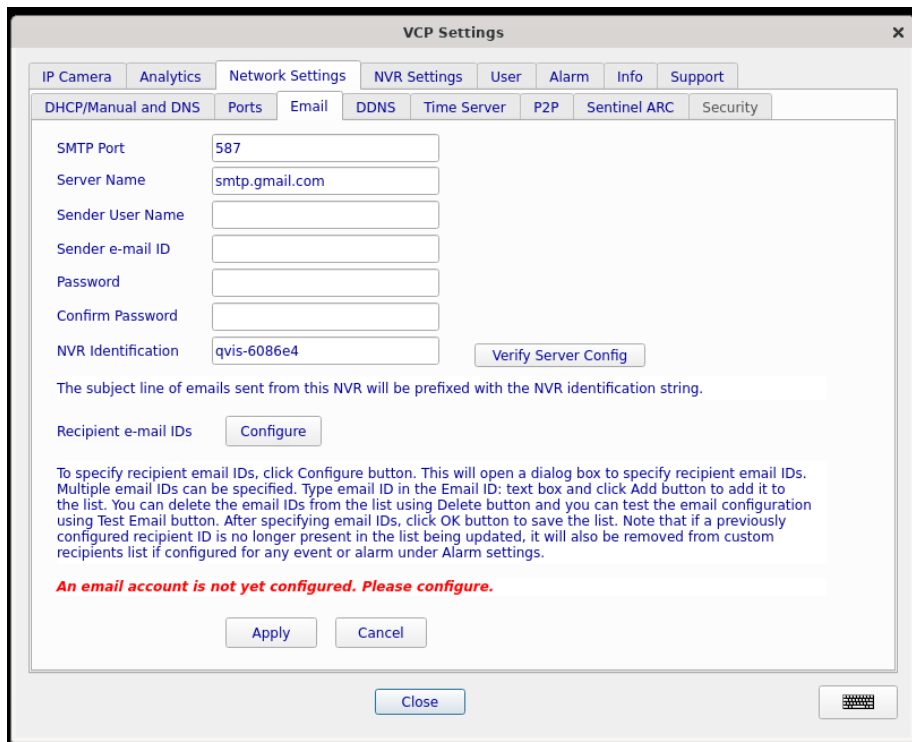


Select which type of recording is required for each channel



Email and Monitoring

6. Browse to Network Settings > Email to setup email alerts. (up to 100 email addresses can be used. Each email address can have its own trigger)



7. If Qvis Monitoring will be monitoring the unit, please complete the following page with settings they provide.

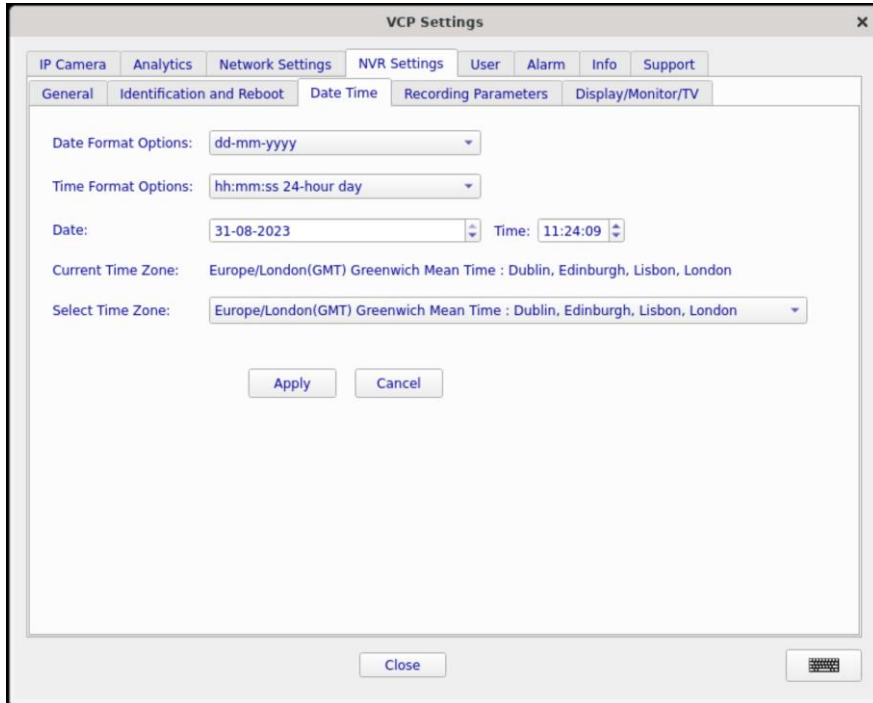
The screenshot shows the 'VCP Settings' window with the 'Sentinel ARC' tab selected. The configuration includes fields for Host Address, Port Number (1-65535), and Entity ID. There is a checkbox for 'Enable Transmitter Test' with an 'Interval' field (1-1440 Mins). A yellow highlight contains the text: 'On Sensor trigger, a video of below duration is pushed to ARC, provided "Notify Alarm Receiving Center" option is checked in "Alarms" menu.' Below this are 'Pre-Context Interval' (1 Seconds) and 'Post-Context Interval' (7 Seconds) dropdowns. Buttons for 'Test ARC Connection', 'Apply', and 'Cancel' are present.

General Settings

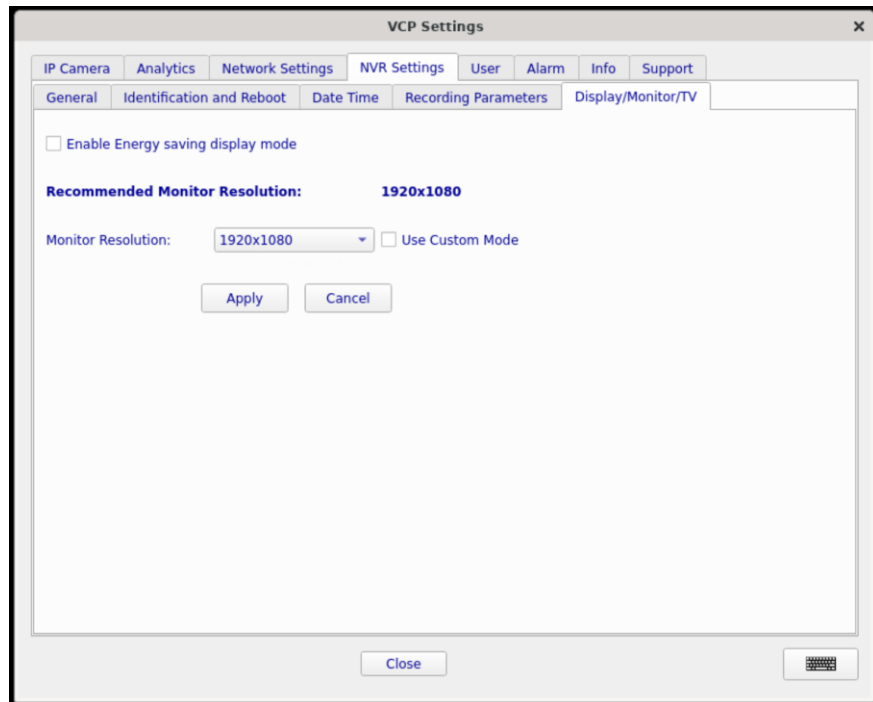
8. Give the nvr a name and set an auto reboot if required.

The screenshot shows the 'VCP Settings' window with the 'Identification and Reboot' tab selected. Under 'NVR name and description', the 'Name' field contains 'qvis-6086e4' and the 'Description' field contains 'QVIS NVR System'. Under 'Auto Reboot Settings', the 'Set Time' is '04:00'. The 'Frequency' section has 'Weekly Day' set to 'Tuesday', 'Monthly Date' set to '01', and 'Never' is unselected. The 'Last reboot time' is 'Tuesday 29 August 2023 10:57:49 AM BST'. Buttons for 'Apply', 'Cancel', and 'Close' are visible.

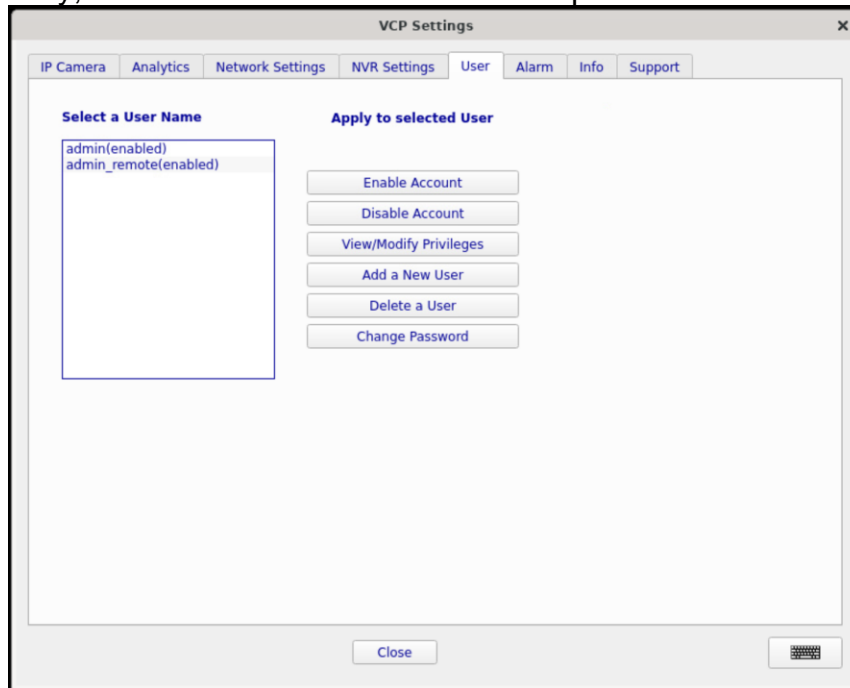
9. Set date, time and timezone.



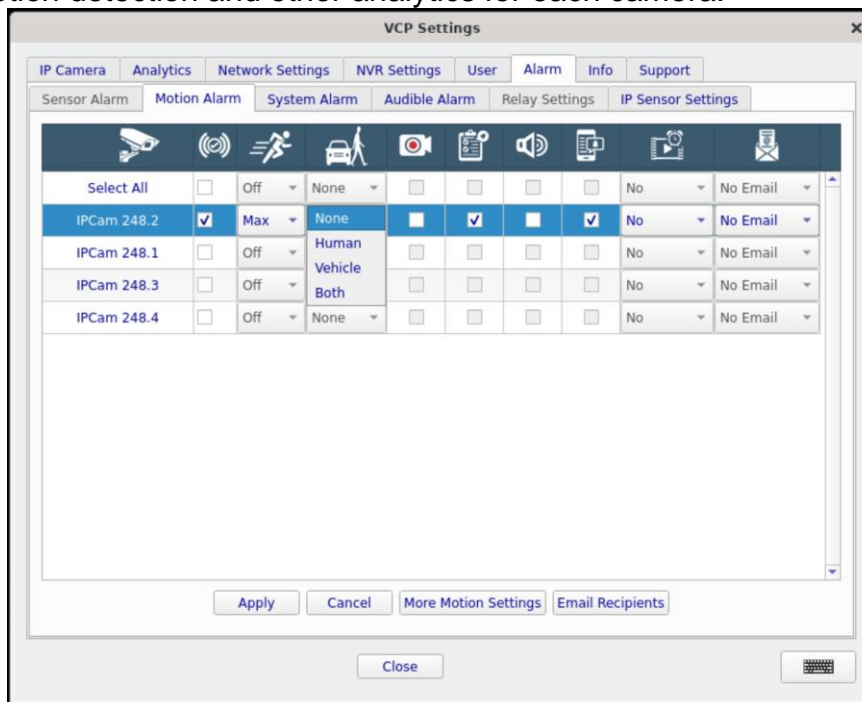
10. Adjust the display resolution as required for the monitor being connected.



11. Create, modify, or delete user and individual user permissions:



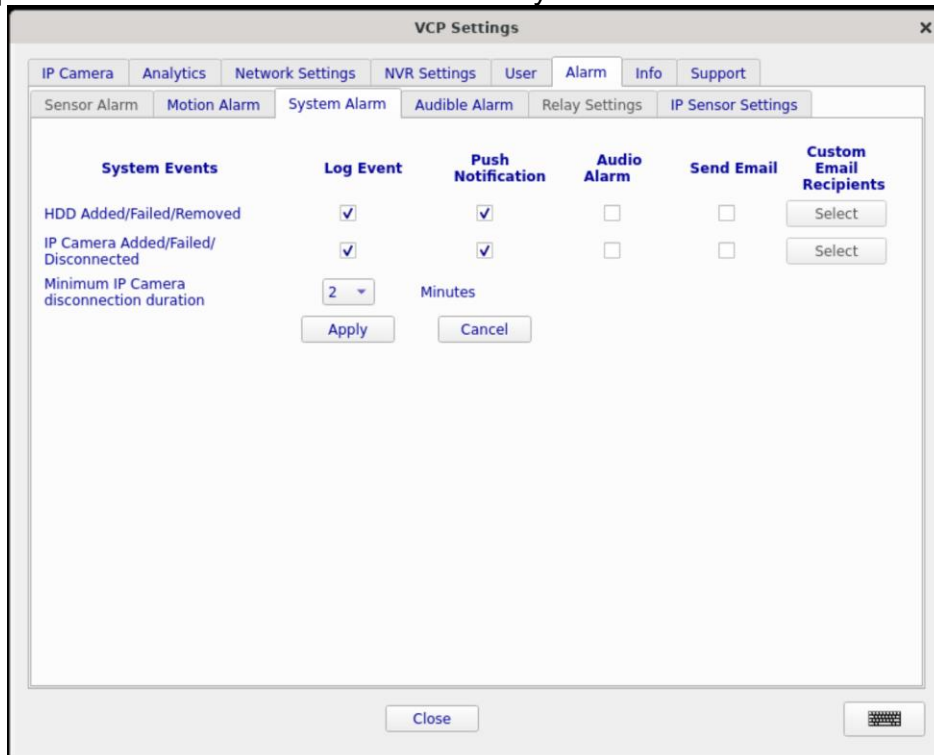
12. Setup motion detection and other analytics for each camera:



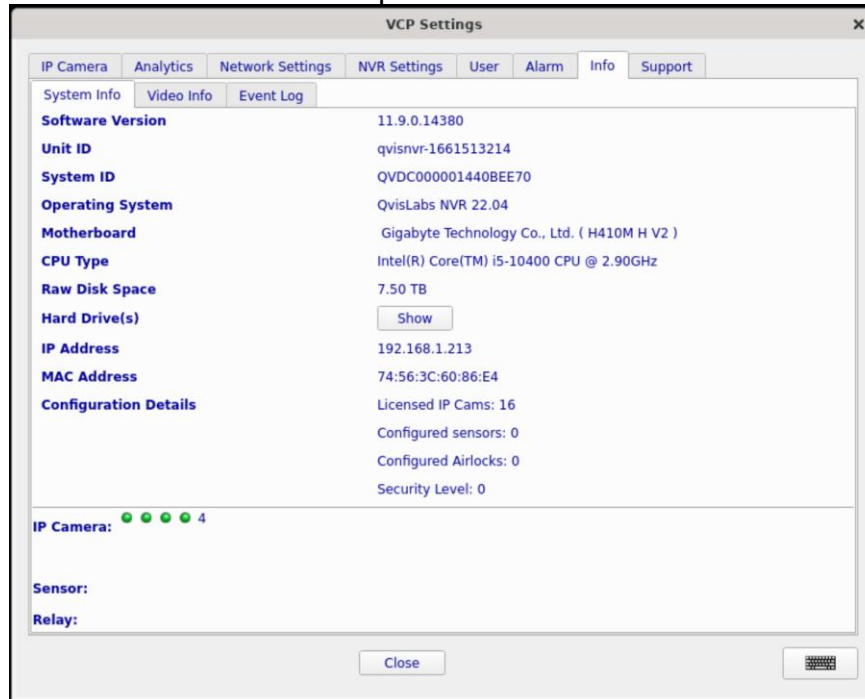
13. Select "More motion settings" to set an area for the motion detection.



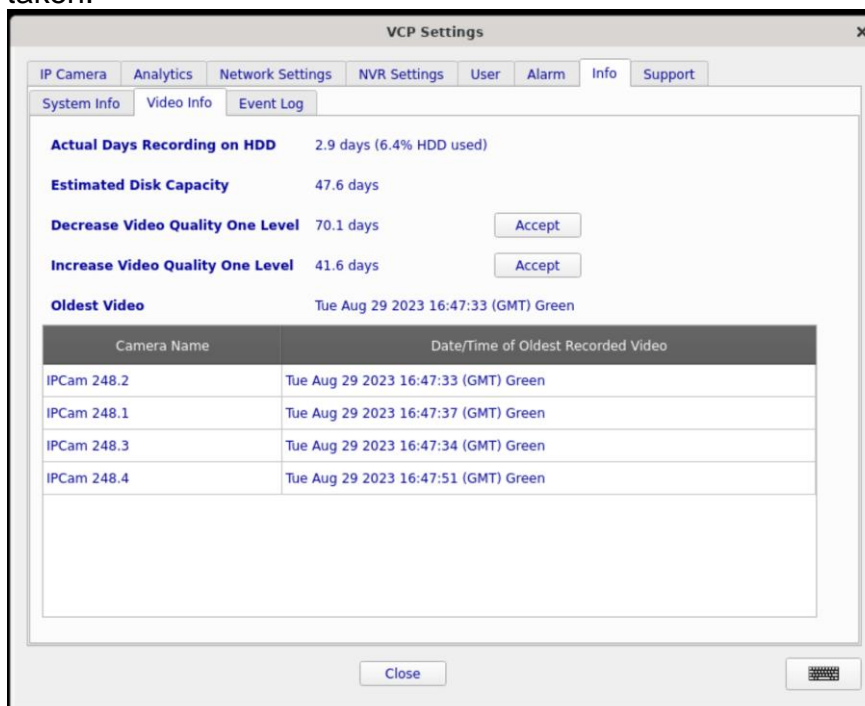
14. Setup events alarms and notifications for system issues:



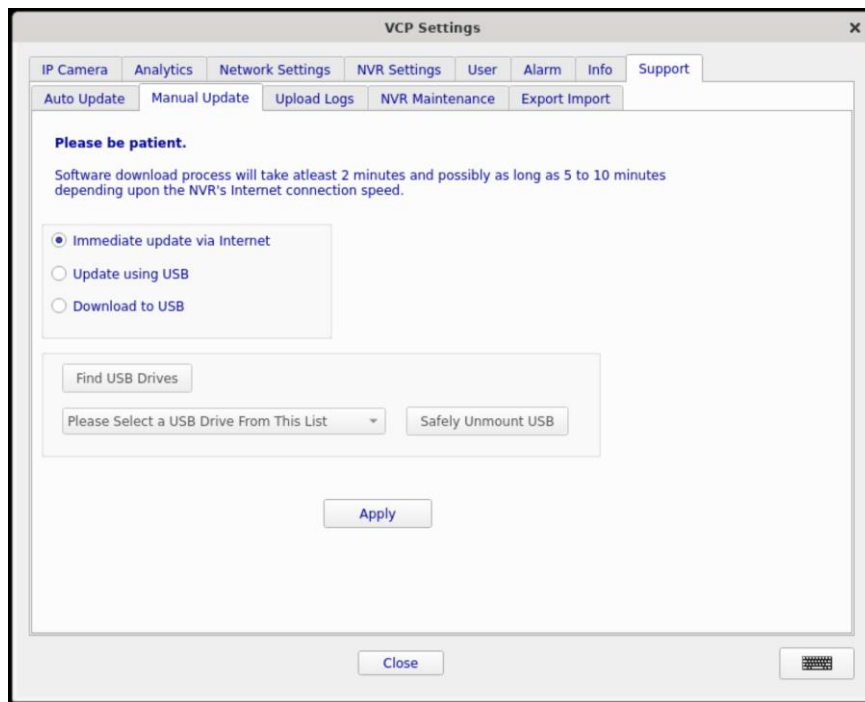
15. The System Info tab, will tell you information about the recorder such as firmware version, Ip address and current hdd space:



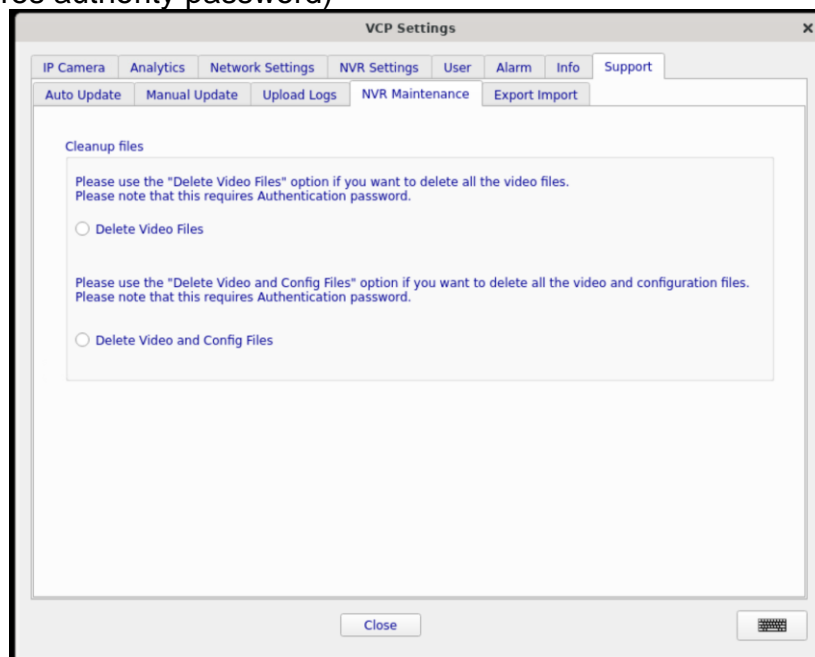
16. Video info will show how many days of recording the unit has and percentage of hdd space taken.



17. The “Manual Update” tab will allow you to prompt the recorder to look for an update online OR upload firmware from a USB stick (once downloaded from the puretech site).



18. “NVR maintenance” can be used to wipe the HDD and/or wipe hdd and recorder config (requires authority password)



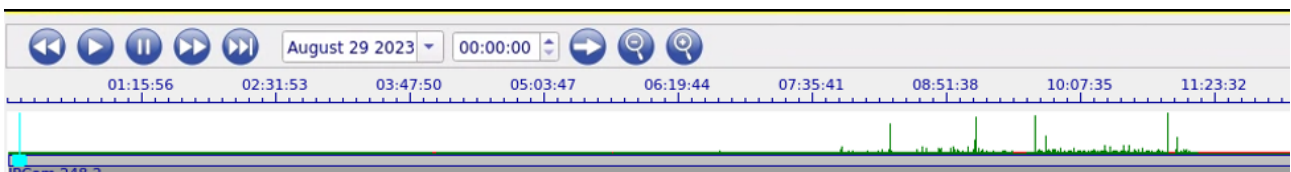
Playback and Backup

19. For playback, right click on live view and select playback:

Select a chosen date of recording.
Green means recorded data.

And which camera the footage took place.

The timeline at bottom will show motion in the green spikes. The higher the spike, the more motion has happened.



To back up footage click the down arrow on the right

Select "New"



Select camera and date/time

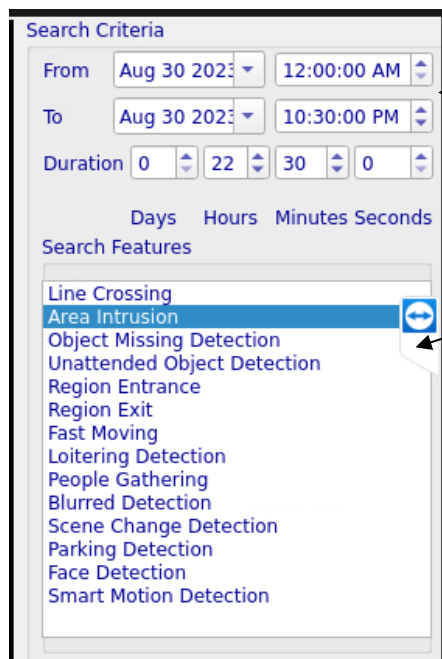


Select USB stick and "Backup now"



Analytics

20. To search analytics, right click live view and select "Search Analytics"



Choose date/time, duration.

Type of analytics:

Area intrusion

Lin crossing

Loitering etc...

Select chosen event from search results below

Camera Name	Time Stamp	Type
IPCam 248.1	30-08-2023 06:40:15	Area Intrusion
IPCam 248.1	30-08-2023 06:40:27	Area Intrusion
IPCam 248.1	30-08-2023 07:05:03	Area Intrusion
IPCam 248.1	30-08-2023 07:36:02	Area Intrusion
IPCam 248.1	30-08-2023 07:47:17	Area Intrusion

Smart Search

21. To search for “dumb motion” events, right click on live view and select “Smart Search”

From here select which camera, date and time and which area of the screen the motion occurred.



Click apply and any results will appear on the right hand side. Double click any tile to play.

