

| | |
|-------------------|-------------------|
| PRODUCT: | Cortex VMS |
| ITEM CODE: | |

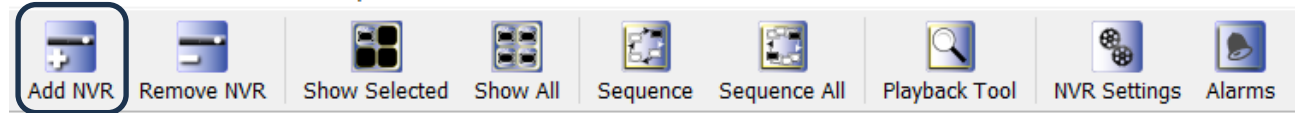
Introduction

This guide has been formulated to assist with the initial setup of Cortex VMS.

1. Download and install Cortex VMS from:
<https://support.qvis.co.uk/hc/en-us/articles/360011265158-PC-Software-%CE%BB-Cortex->

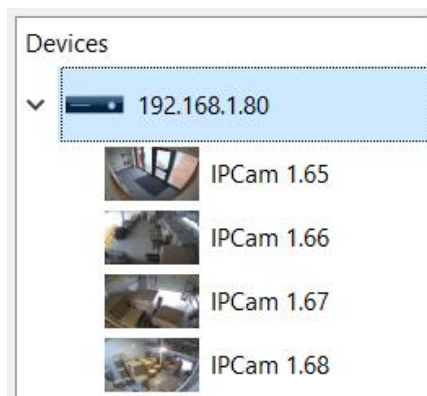
2. Select "Add NVR" from top menu bar

File Edit View Tools Help



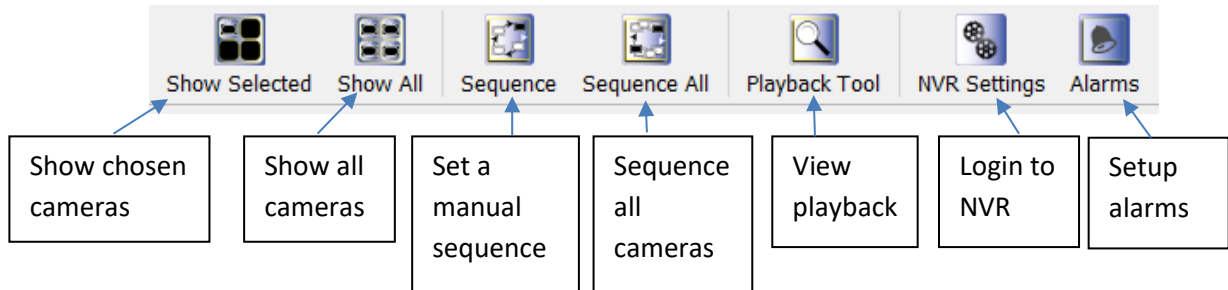
3. Complete the fields with required information:
(Note: add NVR on same LAN IP address or remotely if port forwarded using port 50000)

4. The NVR will appear in the devices list on top left (press the dropdown to view connected cameras)

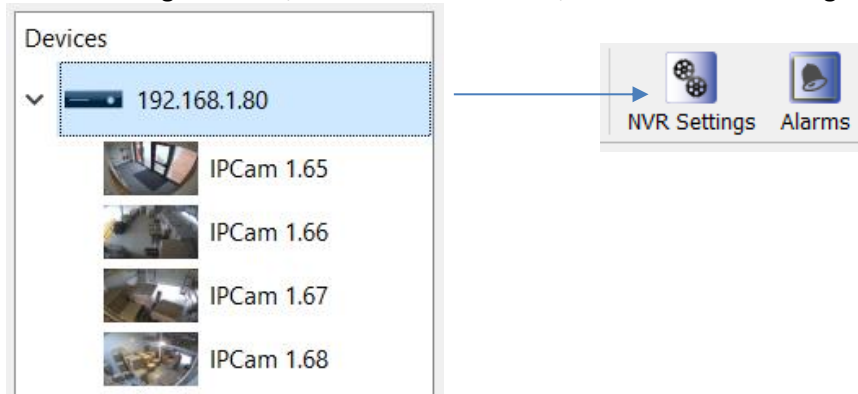


| | |
|--|--|
| PureTech Electrical Products Ltd. Telephone: +44 (0)2392 488300 | Page 1 of 2 Issued By: Technical Dept |
| Approved By: Technical Manager | Date: 09/02/2024 |

5. Once added you can use menu bar as follows:



6. To login to NVR, select the NVR on left, and click "NVR Settings"



7. Login using NVR login credentials and brows NVR menus as normal.

The screenshot shows a dialog box titled "Please Enter Account Information" with a close button (X). It contains two input fields: "User Name:" and "Password:". Below the fields are three buttons: "Forgot Password", "OK", and "Cancel".