

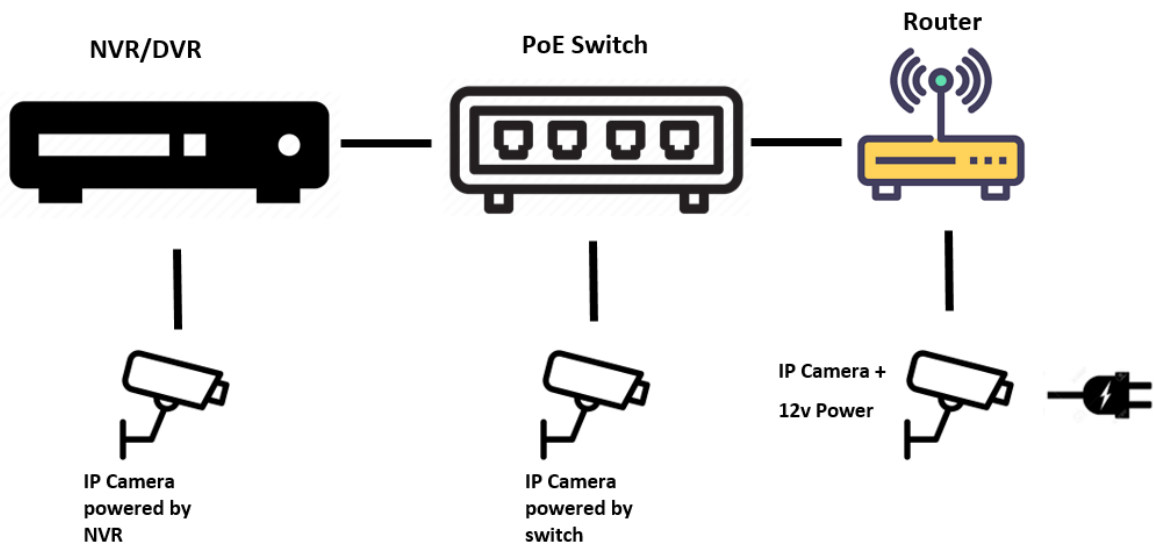
PRODUCT:	VIPER
ITEM CODE:	

Introduction

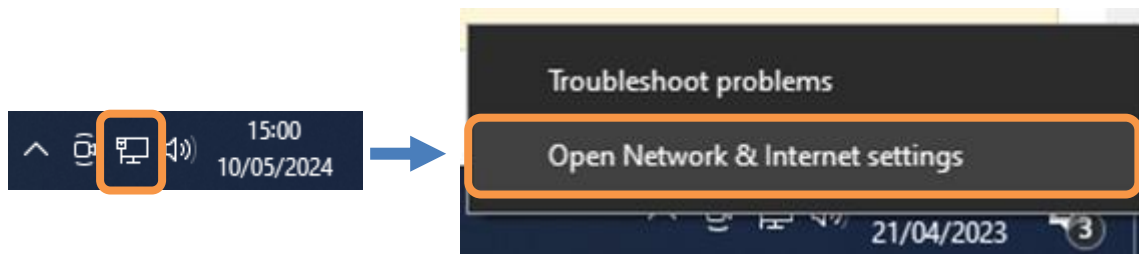
This guide has been formulated to assist with adding viper cameras via network switch.

Initial Device Set-Up

1. Connect RJ45 from Lan port of NVR to switch and from camera to switch (example below)

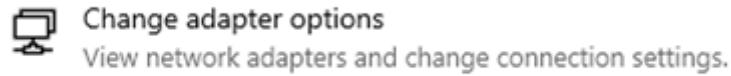


2. Connect laptop to same switch via LAN cable, right click the network icon and select Network settings.

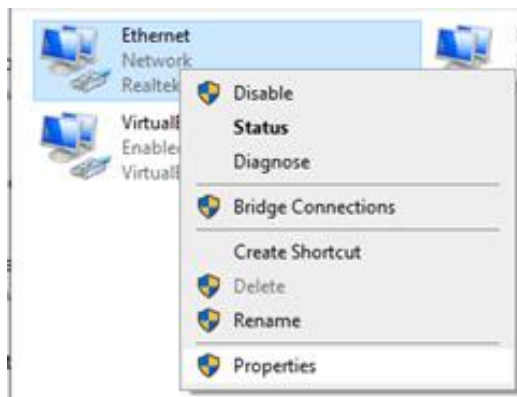


PureTech Electrical Products Ltd. Telephone: +44 (0)2392 488300	Page 1 of 4 Issued By: Technical Dept
Approved By:	Date:

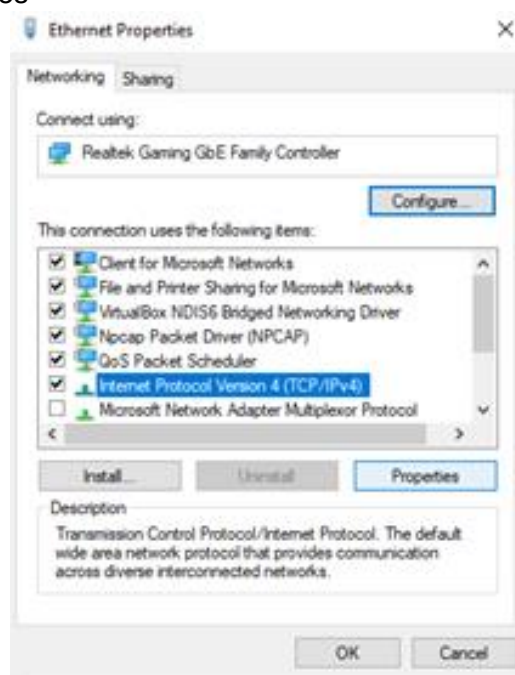
3. Select change adaptor options



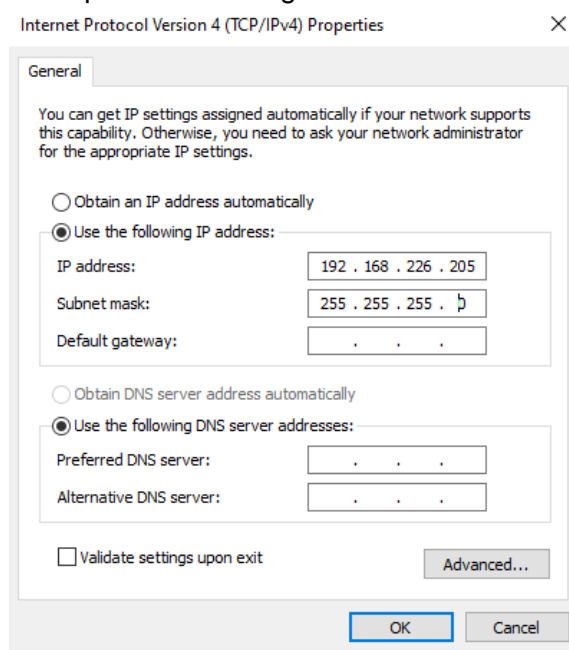
4. Right click ethernet and click properties



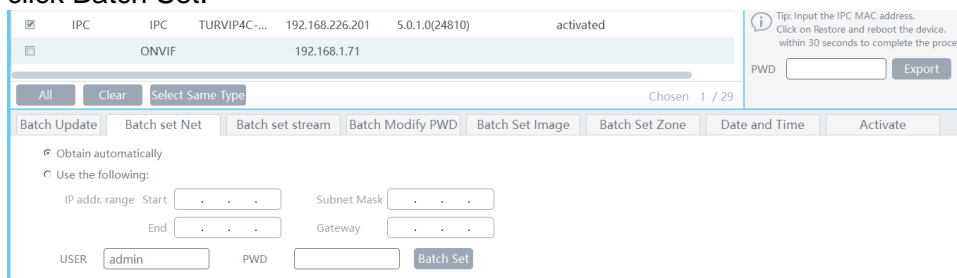
5. Select IPV4 and Properties



6. Select use following IP and input the following. Click ok and then close on previous window.



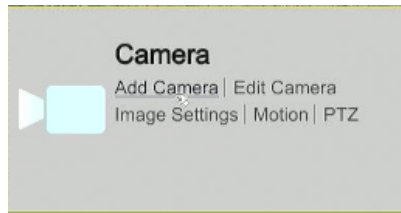
7. download and install the Viper config tool <https://support.qvis.co.uk/hc/en-us/articles/360002316938-Viper-Camera-Configuration-Tool->
8. Open the software and locate the camera (will be 192.168.226.201 by default). Select Batch Set Net, (ensure obtain automatically is selected) enter 123456 in "Pwd" box and click Batch Set.



(Should show success once IP has changed)

9. Login to NVR, go to Settings > Camera and Add camera. The NVR will find the camera with a 192.168.X.X address.

<p>PureTech Electrical Products Ltd. Telephone: +44 (0)2392 488300</p>	<p>Page 3 of 4 Issued By: Technical Dept</p>
<p>Approved By:</p>	<p>Date:</p>



10. Select the camera and click add.
11. Once the camera is in the list you may need to adjust the password. Click on the pencil icon, enter camera password and click ok. Camera should then come online.

PureTech Electrical Products Ltd. Telephone: +44 (0)2392 488300	Page 4 of 4 Issued By: Technical Dept
Approved By:	Date: