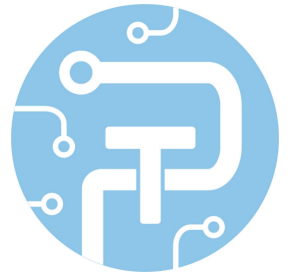
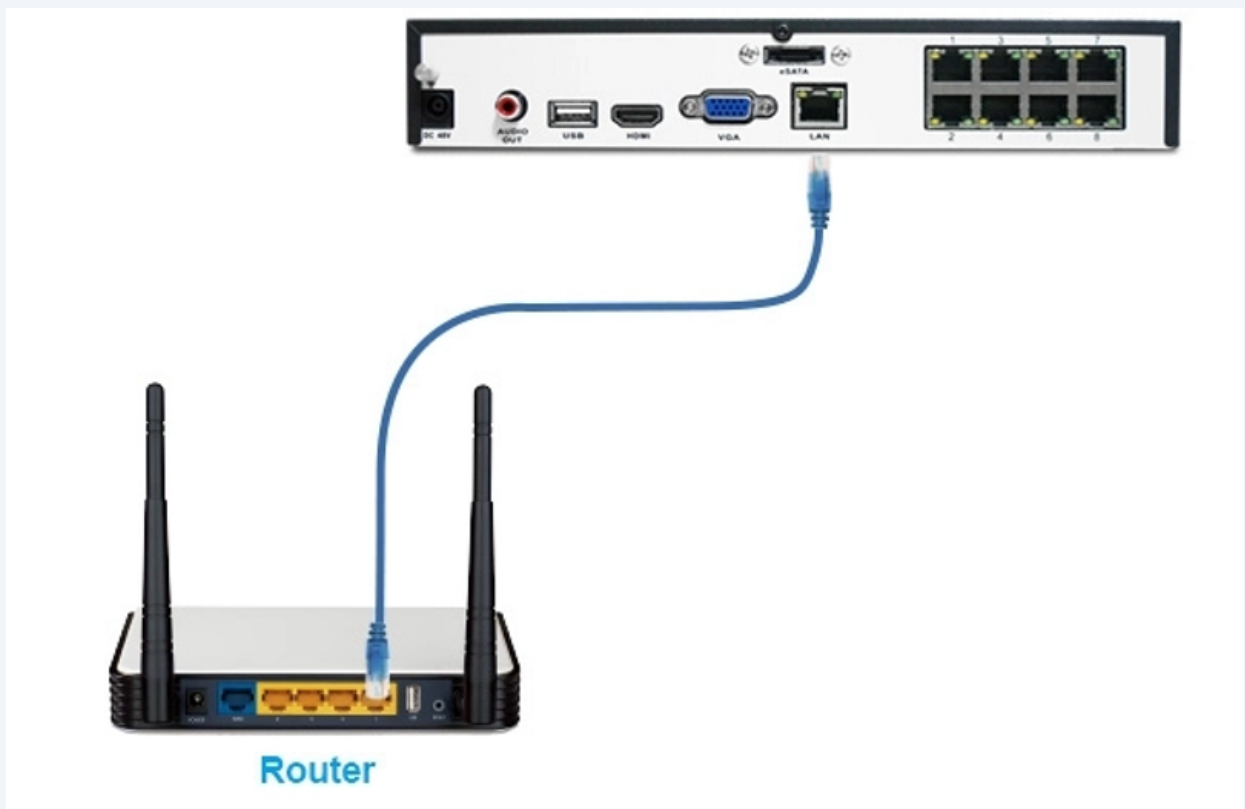


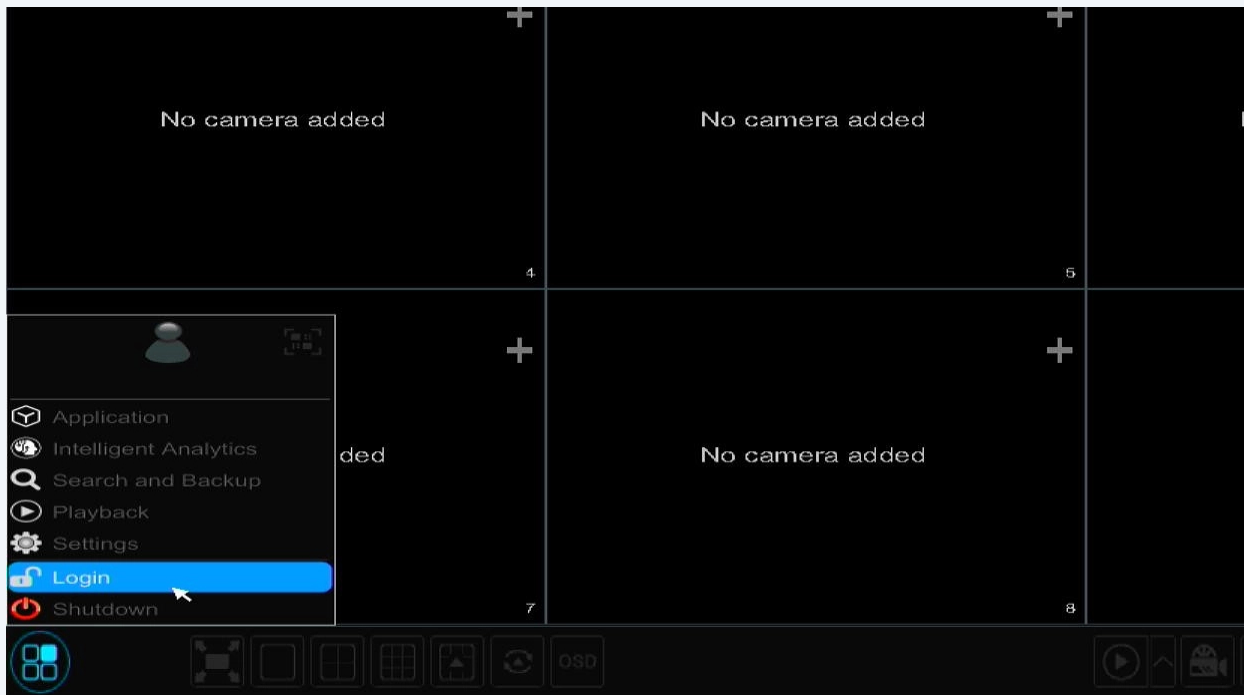
# Viper Getting Online



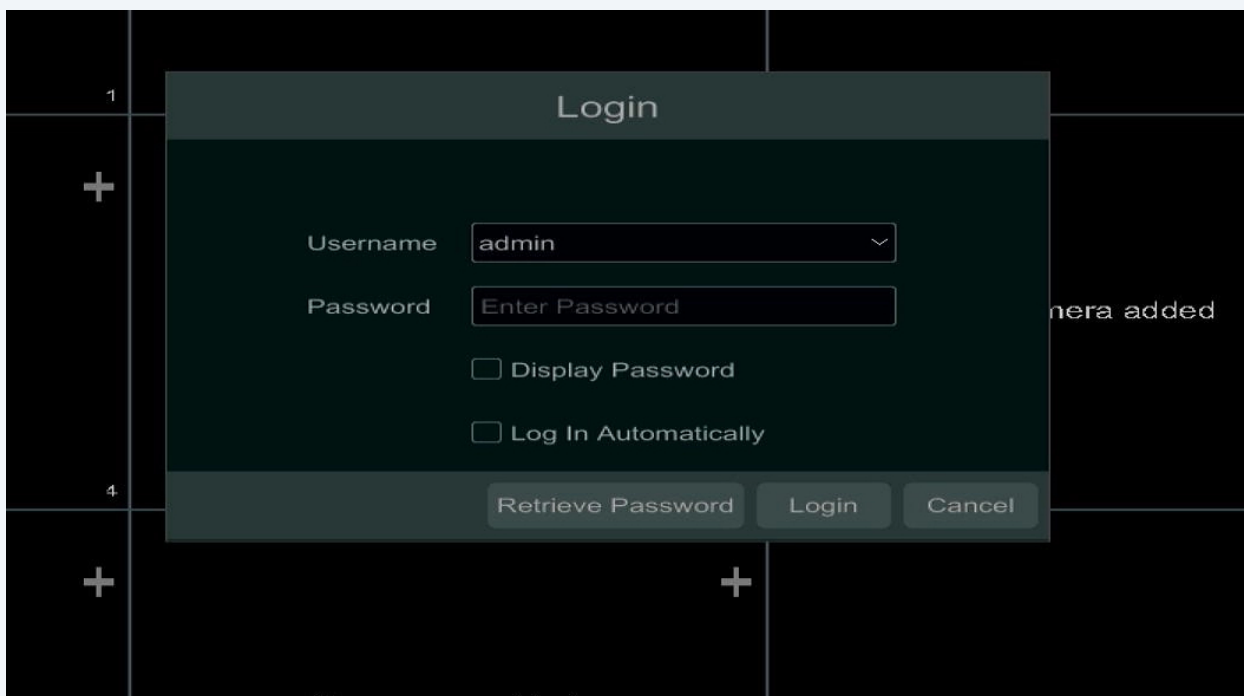
- 1 Connect LAN port of NVR/DVR to LAN port of router.



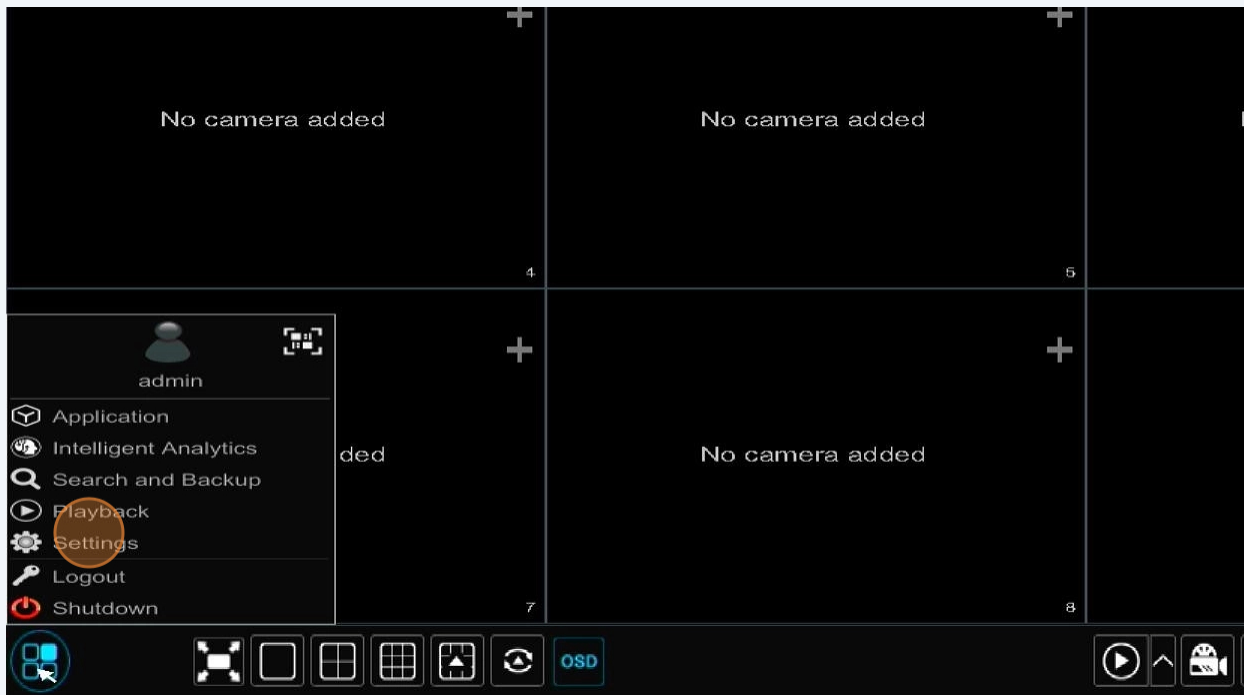
## 2 Click Start menu and login



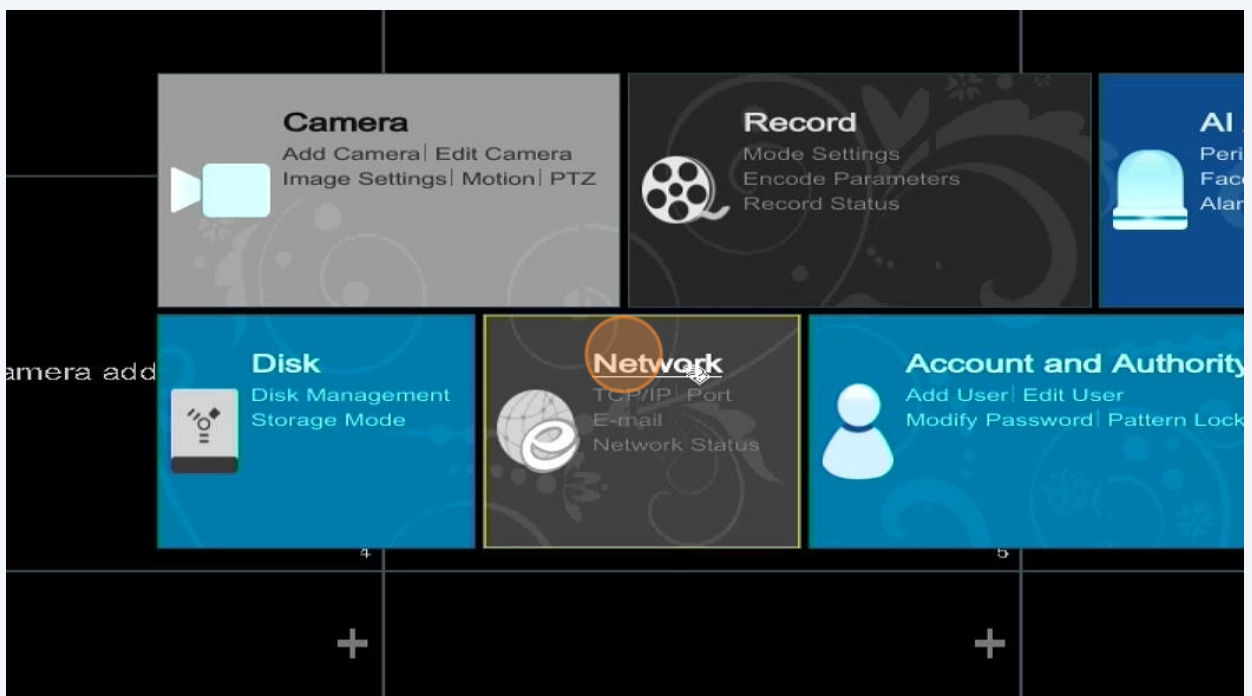
## 3 Enter credentials to login



4 Click Start > Settings

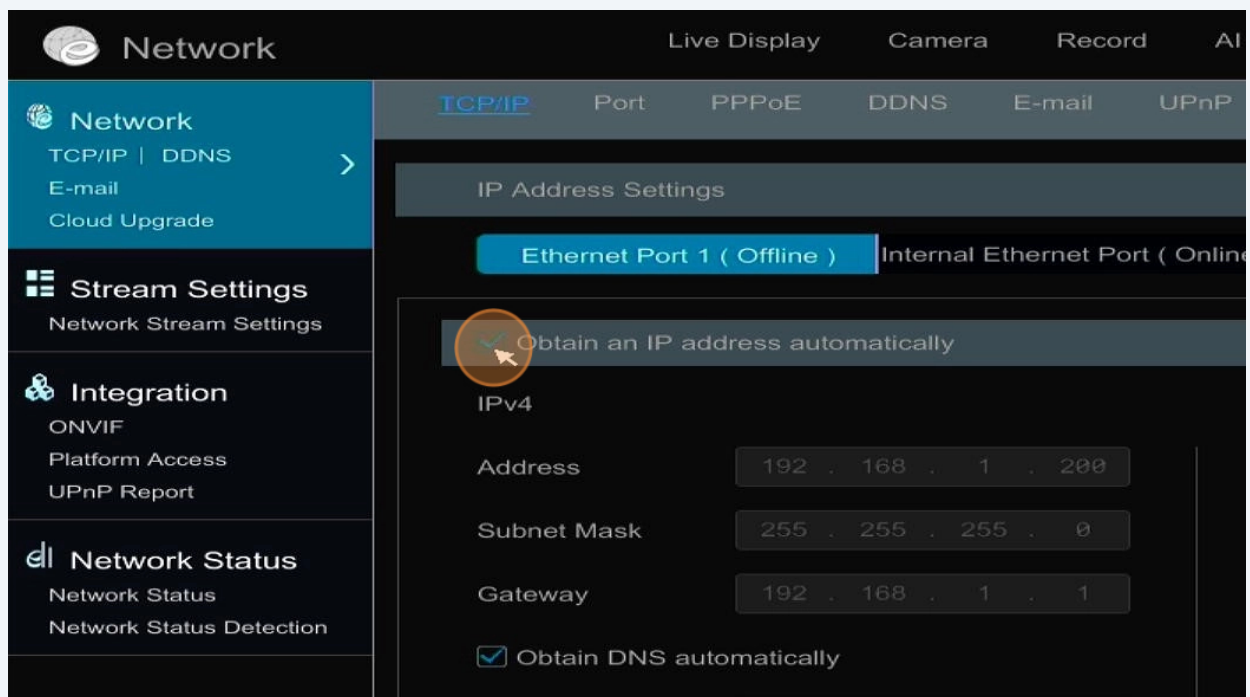


5 Click Network



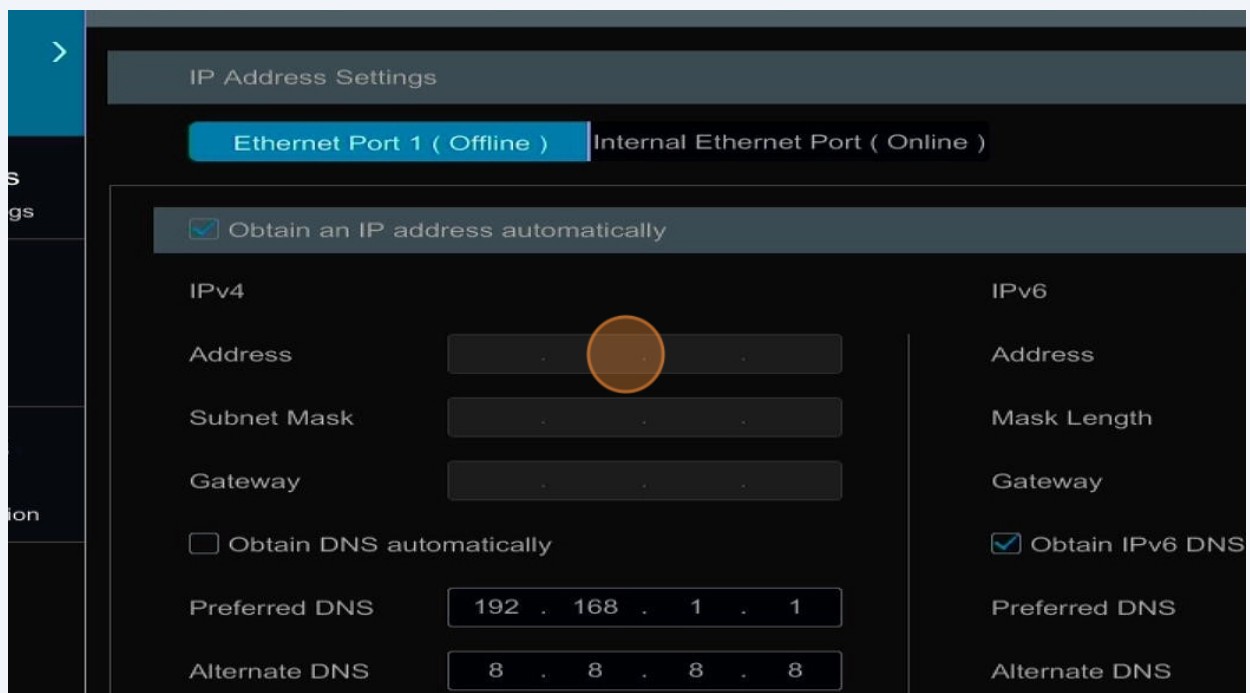
6 Untick "Obtain IP Address Automatically"

Click Apply



7 Tick again, press apply again.

IP info will go blank until new IP settings are obtained from router.



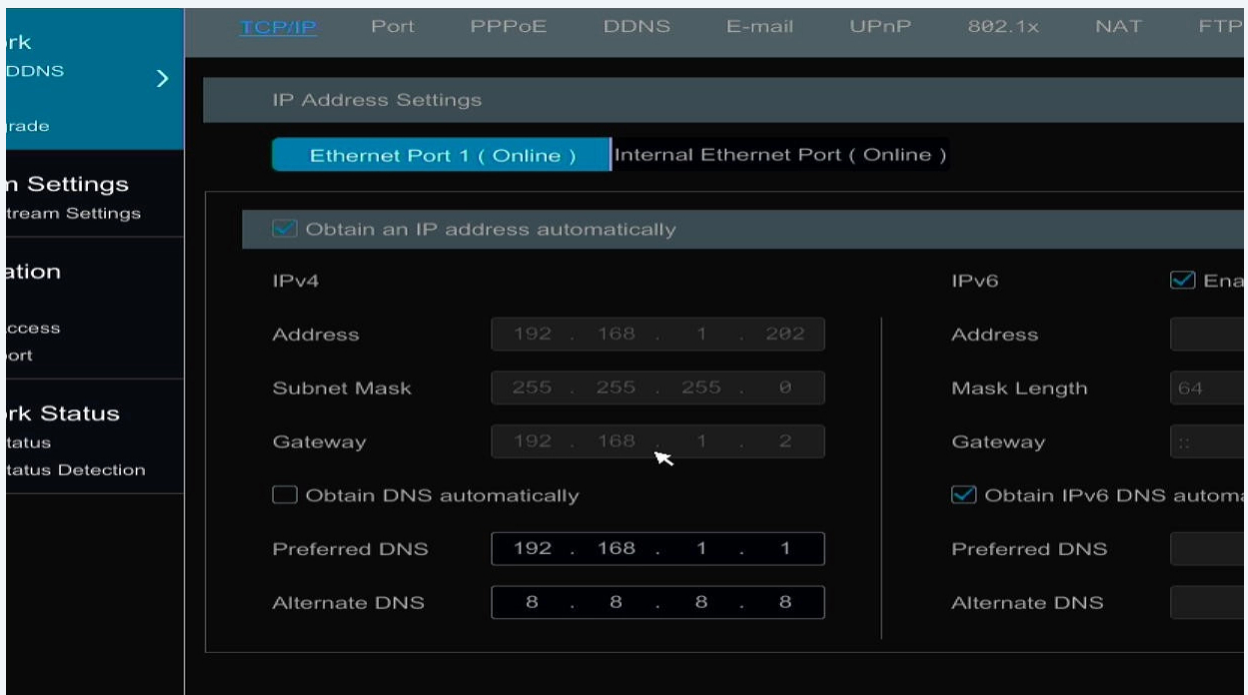
8 When new IP settings show, untick "Obtain DNS automatically."

Enter:

Preferred: Same address as default Gateway

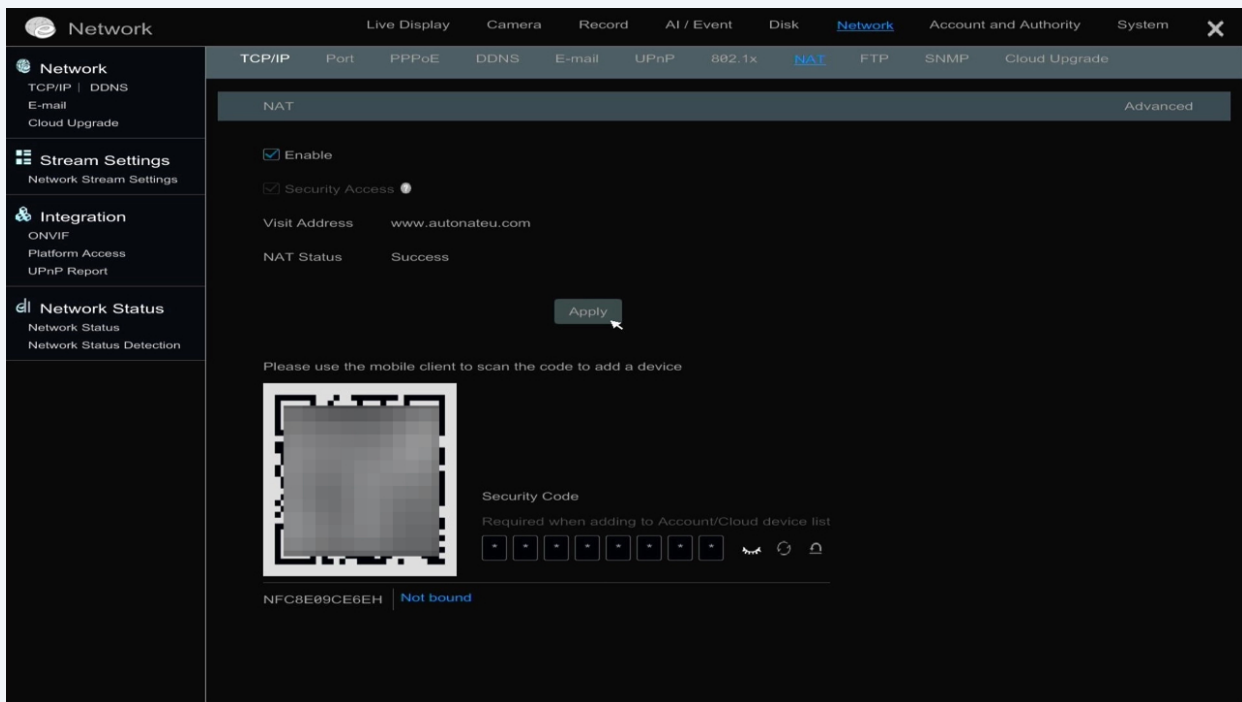
Alternate: 8.8.8.8

Click apply.



- 9 Click on the "NAT" tab and ensure "Enable" is ticked.

NAT Status, should show Success



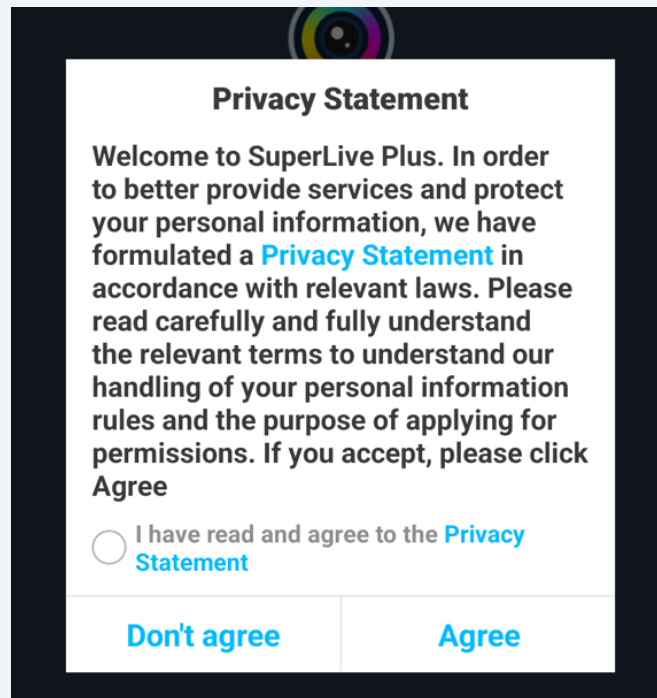
## Add Recorder to Super live Plus

- 10 Download and install Super Live Plus:

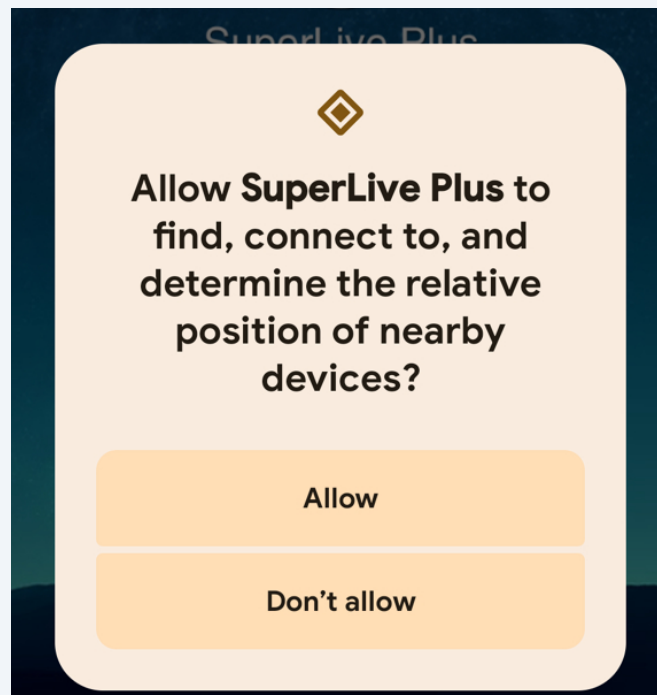
iPhone: [Download](#)

Android: [Download](#)

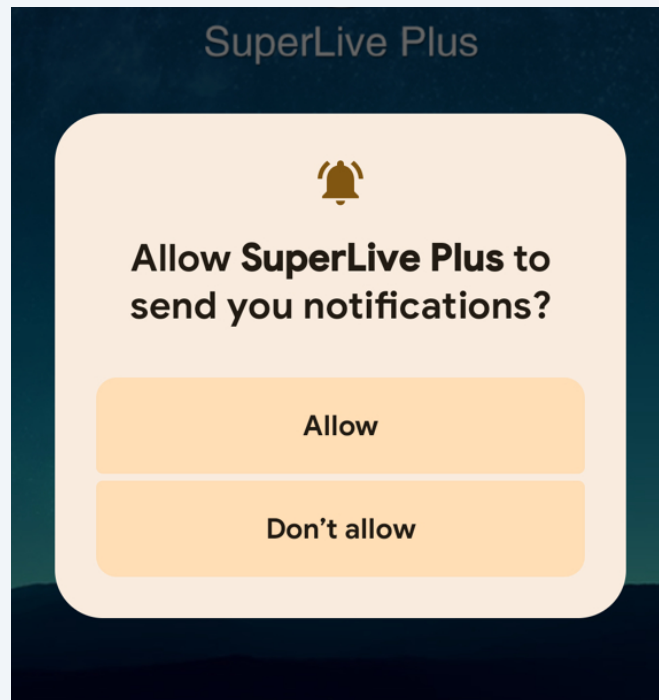
11 Agree Terms and Agree



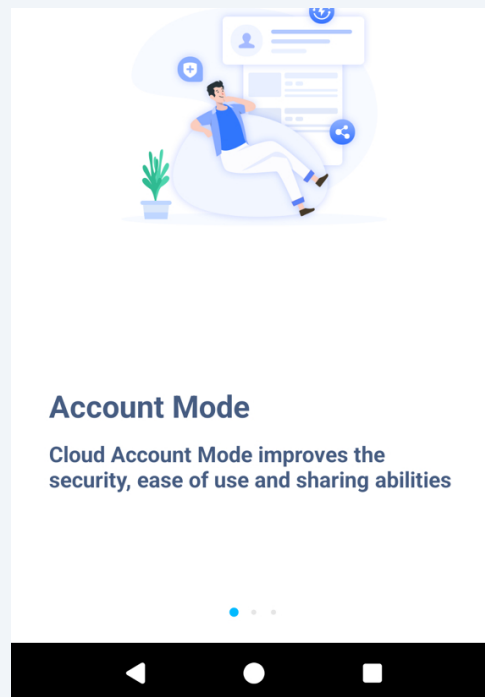
12 Press Allow



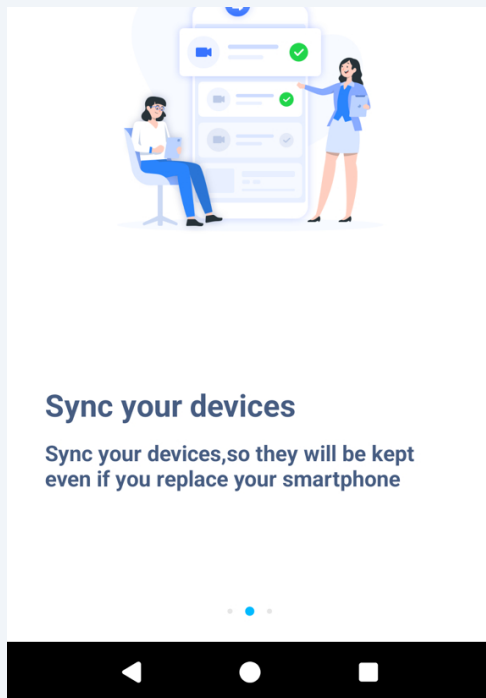
**13** Press Allow



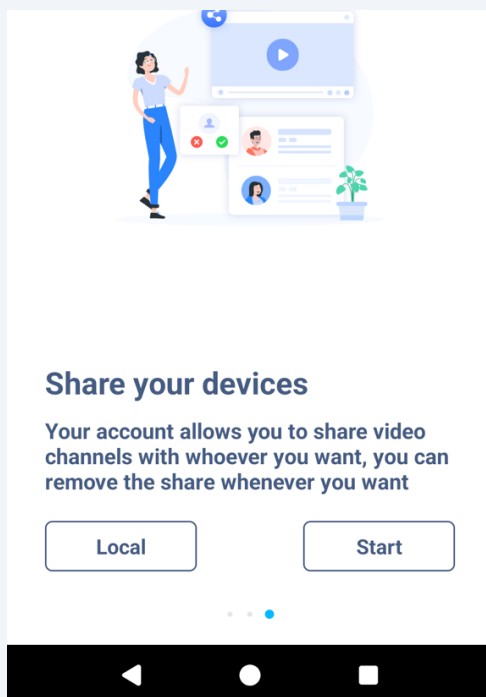
**14** Swipe left



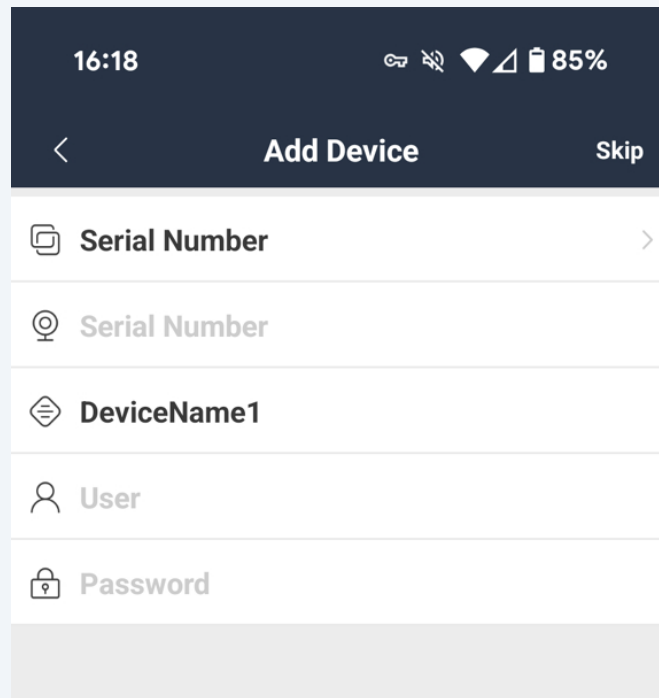
**15** Swipe left



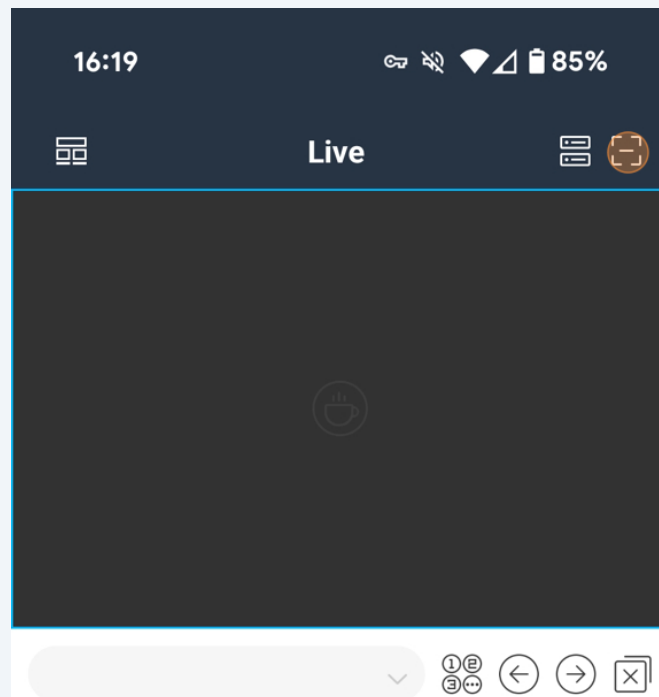
**16** Press Start



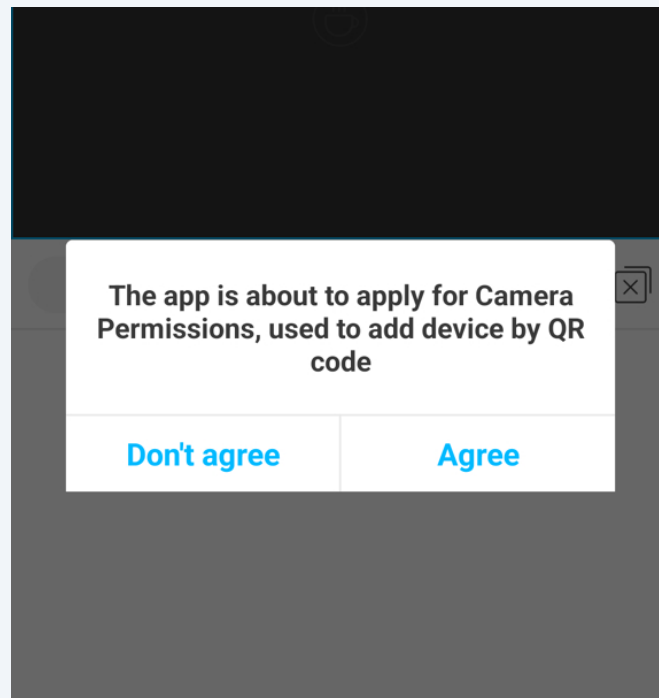
17 Press Skip



18 Press Scan Option top right

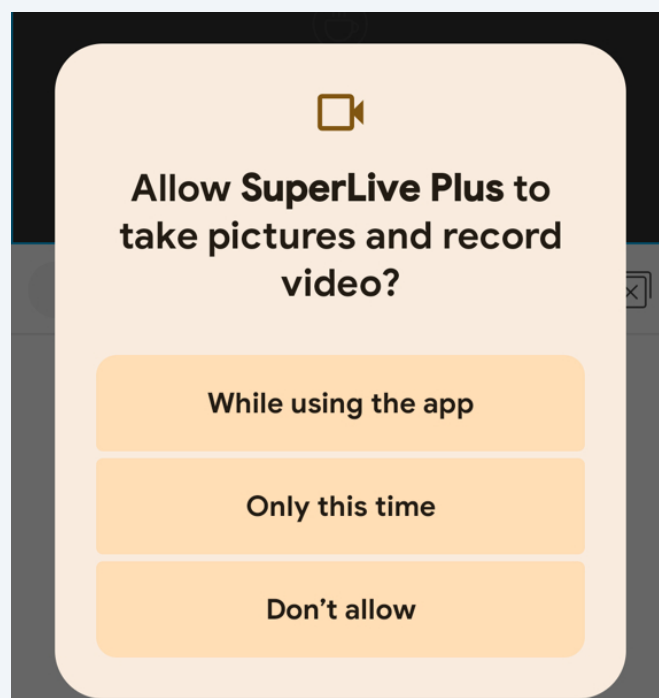


19 Press Agree



20 Press "While Using App"

Then Scan the QR code on the NAT page of recorder



**21** Enter recorder password, press save

The screenshot shows a mobile application interface for modifying a device. The title bar at the top is dark blue with a white back arrow on the left and the text 'Modify Device' in white. Below the title bar are four white input fields, each with a grey border and a small icon on the left. The first field has a location pin icon and contains the text 'NFC8E09CE6EH'. The second field has a diamond icon and contains 'DeviceName1'. The third field has a person icon and contains 'admin'. The fourth field has a lock icon and contains a password represented by seven dots, with the fourth dot from the left highlighted in orange. Below these fields is a large, solid grey rectangular area, likely a placeholder for a save button or additional information.